

Editorial & News

Employment

Community

People

Firms

Blogs

Forum

Work Updates

Academia

About

Login / Join



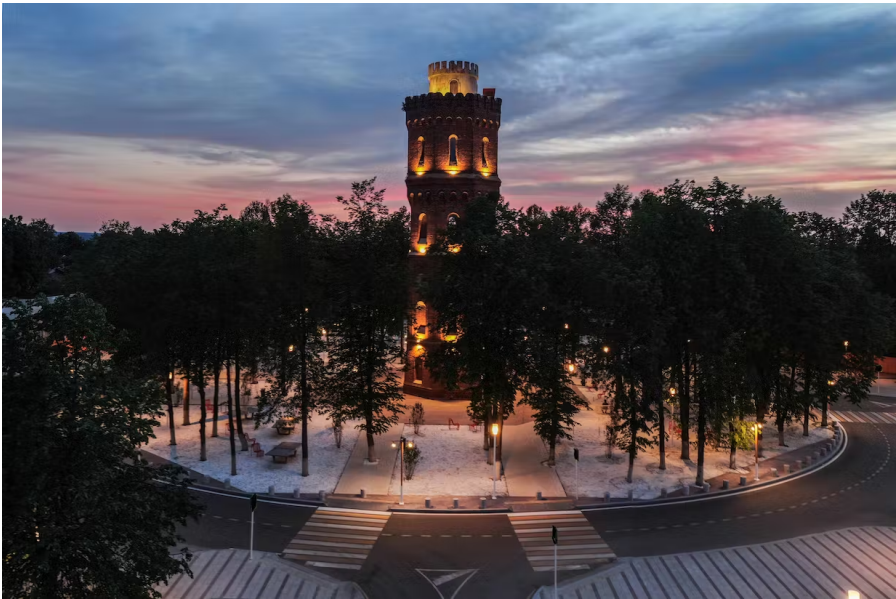
Basis Architectural
Bureau
Moscow, RU

Follow 1

Profile

Projects

Profile Admin:
Olgaolga | flag



The brick water tower, reminiscent of the donjon tower is one of the main attractions of the city.

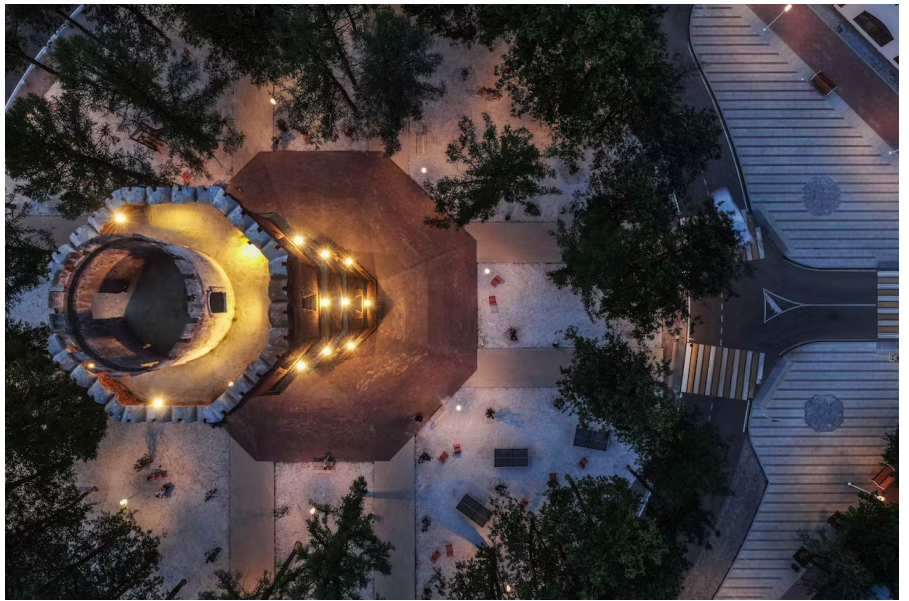
27 more images ↓

Renovation of the historical centre of Zaraysk

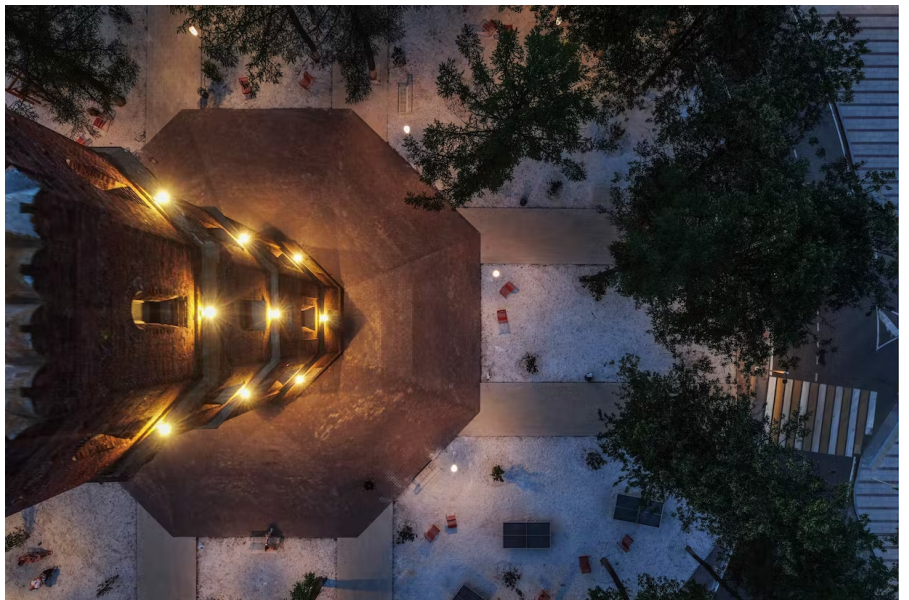
The project for the renovation of the historical city centre of Zaraysk has been completed. It won the 2018 All-Russia competition of the best projects in developing a comfortable urban environment in small cities and historical settlements. It was important for the architects of

Read more

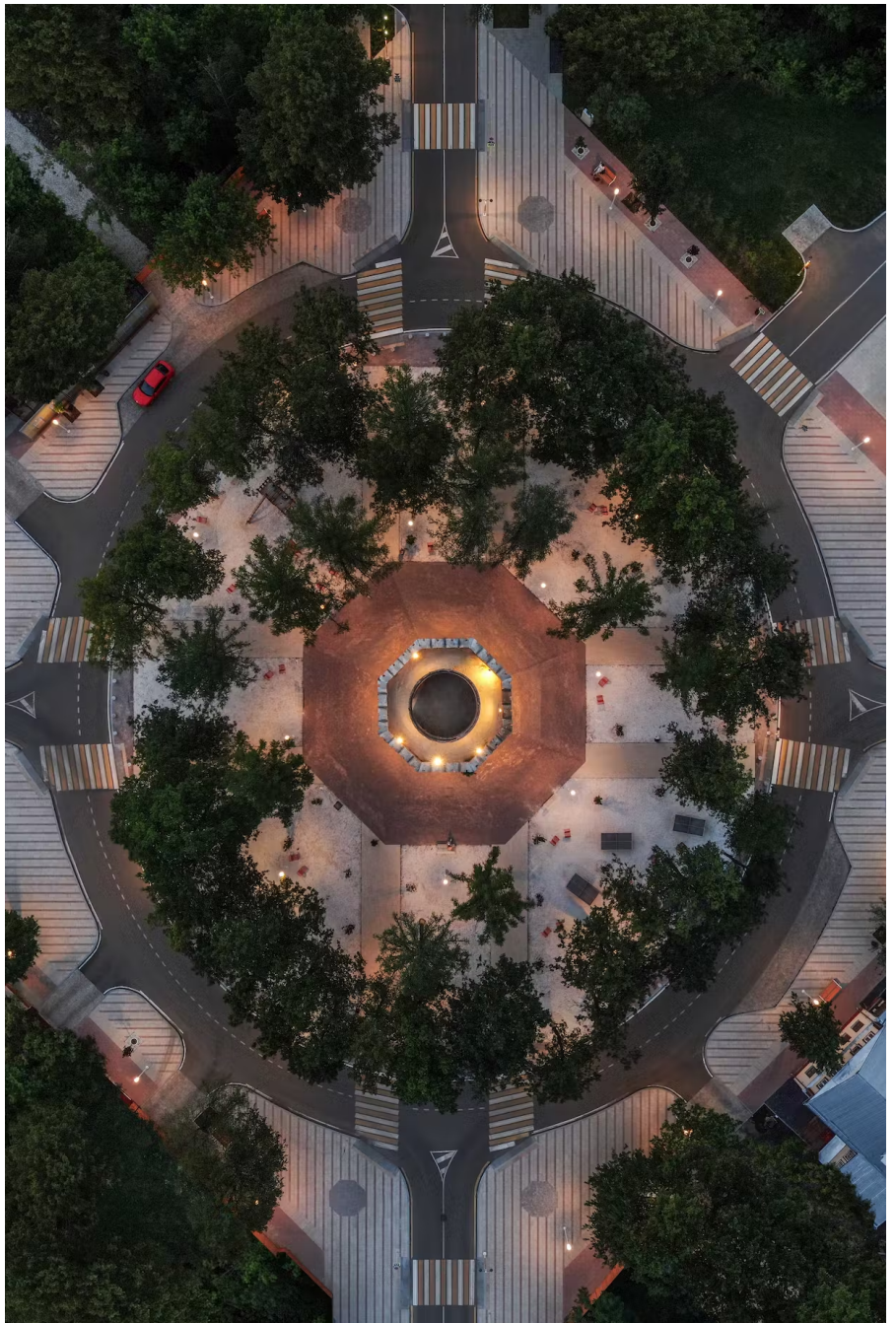
Status: Built
Location: Zaraysk, RU
Firm Role: architecture, landscape



To emphasize this dominance, a contrasting coating of white marble chips and slabs in the tone of bricks was created around it.



Red and white paved paths converge in rays from the roadway to the tower.



Historic cobblestone found by archaeologists during the construction works is integrated into the paving where the street enters the square.



The intimate and serene atmosphere of this place is reflected in authentic wooden lamps and randomly arranged orange and red chairs.



It was important for the architects of the bureau not only to create a comfortable environment for locals and tourists but also to emphasize the historical significance of the city, to show its uniqueness.





The playground is equipped with wooden objects for playing with white marble sand.





Lighting calculations showed that it was possible to illuminate the pedestrian part and the road together not only with 6-meter lights exceeding the size of wooden houses but also with double-sided lamps arranged in a checkerboard pattern.







Another anchor point is a playground with swings near the central store lined with small pebbles.



Unlike a bright rubber coating, natural materials look more organic here and are suitable for games with water.



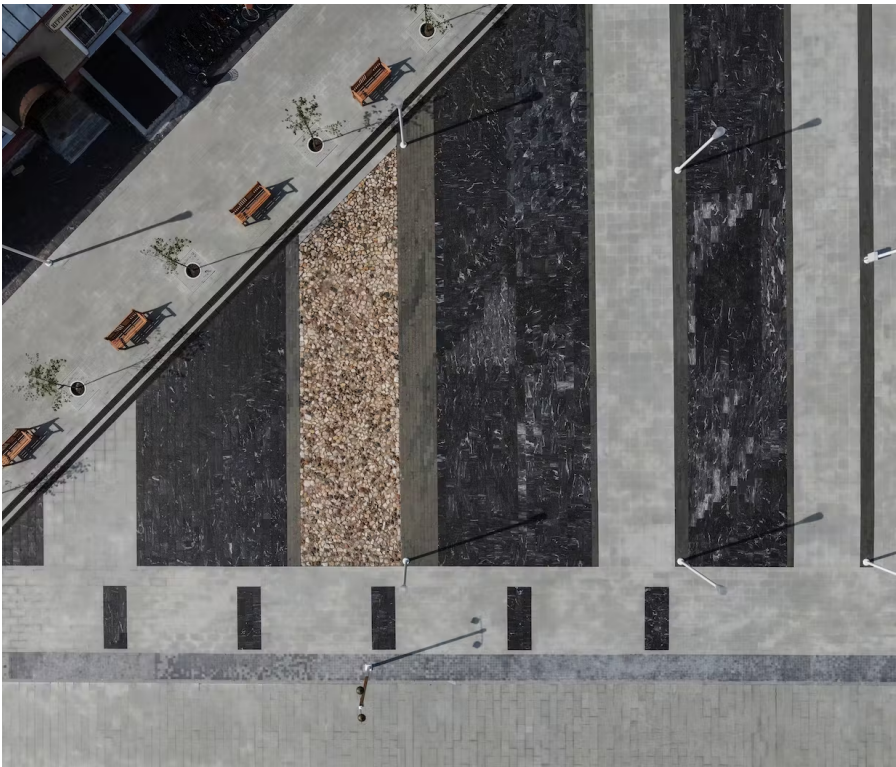




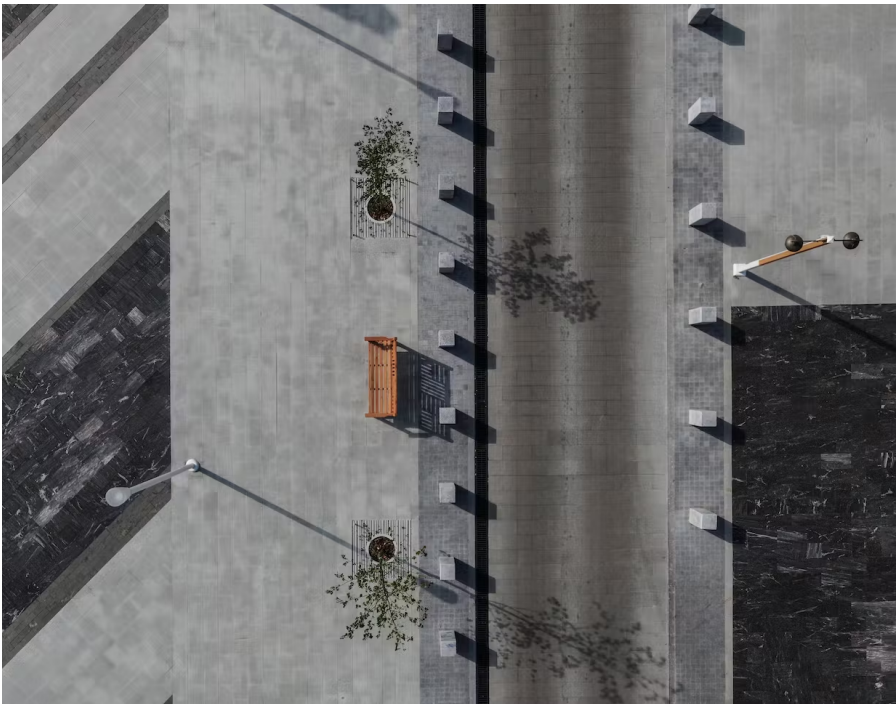
A backlit canopy hanging over a swing, a horizontal bar with an obstacle course and a porch of a tea house is part of the new design code and is repeated in several areas of the city.



The restored memorial to the heroes of the Second World War with the Eternal Flame is visually highlighted by paving.



The history of the place is preserved with textured tiles of chipped granite which outline a chapel that once stood there.







OTHER PROJECTS BY THIS FIRM

[Back to Top](#) ↑



Improvement of the...



PARK MALEVICH



Improvement of the...



Renovation of the historical...



New embankment in Zhukovskiy



The Shimmering Square near...