

[Home](#) / [Park](#) / Malevich Park in Odintsovo, Russia by Basis architectural bu...

Malevich Park in Odintsovo, Russia by Basis architectural bureau

[Park](#) | 1 month ago



Project name: Malevich Park Architecture firm: Basis architectural bureau

Location: Odintsovo, Moscow region, Russia Photography: Dmitry Chebanenko

Principal architect: Maria Repkina Landscape Architecture:

Design team:

Ivan Okhapkin, Anna Anisimova, Anna Geraimovich, Konstantin Pastukhov, Tatyana Kozlova, Angelina Vasnetsova, Valeria Shevtsova, ^[1]_[SEP]Monica Galstyan, Nikita Tchikin, Alexandra Terentyeva

Collaborators: Sculptor Grerory Orekhov Area: 366,5 hectares Design year:

Completion year: 2021 Engineer: Zakhar Smirnov Contractor: Client:

Typology: Park

Basis architectural bureau: Aim: To develop a concept of **contemporary landscape park** next to the Barvikha and Nemchinovka areas taking into account improvement standards for protected natural areas.

Solution: We started working on the park concept by studying the context and searching for the area identity. We found out that this territory is closely related to the name of the famous Russian avant-garde artist **Kazimir Malevich** who after 1917 often visited the neighbouring village of Nemchinovka and was inspired by the local landscapes. There is even a legend about a “Malevich oak tree”, well-known to the researchers of his creative work. We offered to preserve the memory of this place, hence the idea to call the park after Malevich. This predetermined the image of the area referring to the tradition of Russian suprematism.



The concept of the Basis bureau is based on recreating the close link between nature and art. It provides for using basic shapes, close to the main geometrical figures: a square, a circle, and a triangular as well as a reflecting surface of the objects (stainless steel accompanied by black colour). The composed austerity of the architecture favourably highlights the vitality and natural beauty of the area.

The functional zones of the park were designed following the requests from the local population. For instance, there is a quite strong community of volleyball players in the area playing almost in any

weather. We have saved their playing fields making them even more comfortable and updated. The park will also have a new sports cluster with its football fields, tennis and badminton courts, pavilions and stands. The park pavilions inspired by suprematism compositions are equipped with cafes and art spaces.

The park zones are arranged so as to preserve the maximum amount of woodland and the already existing landscape.



























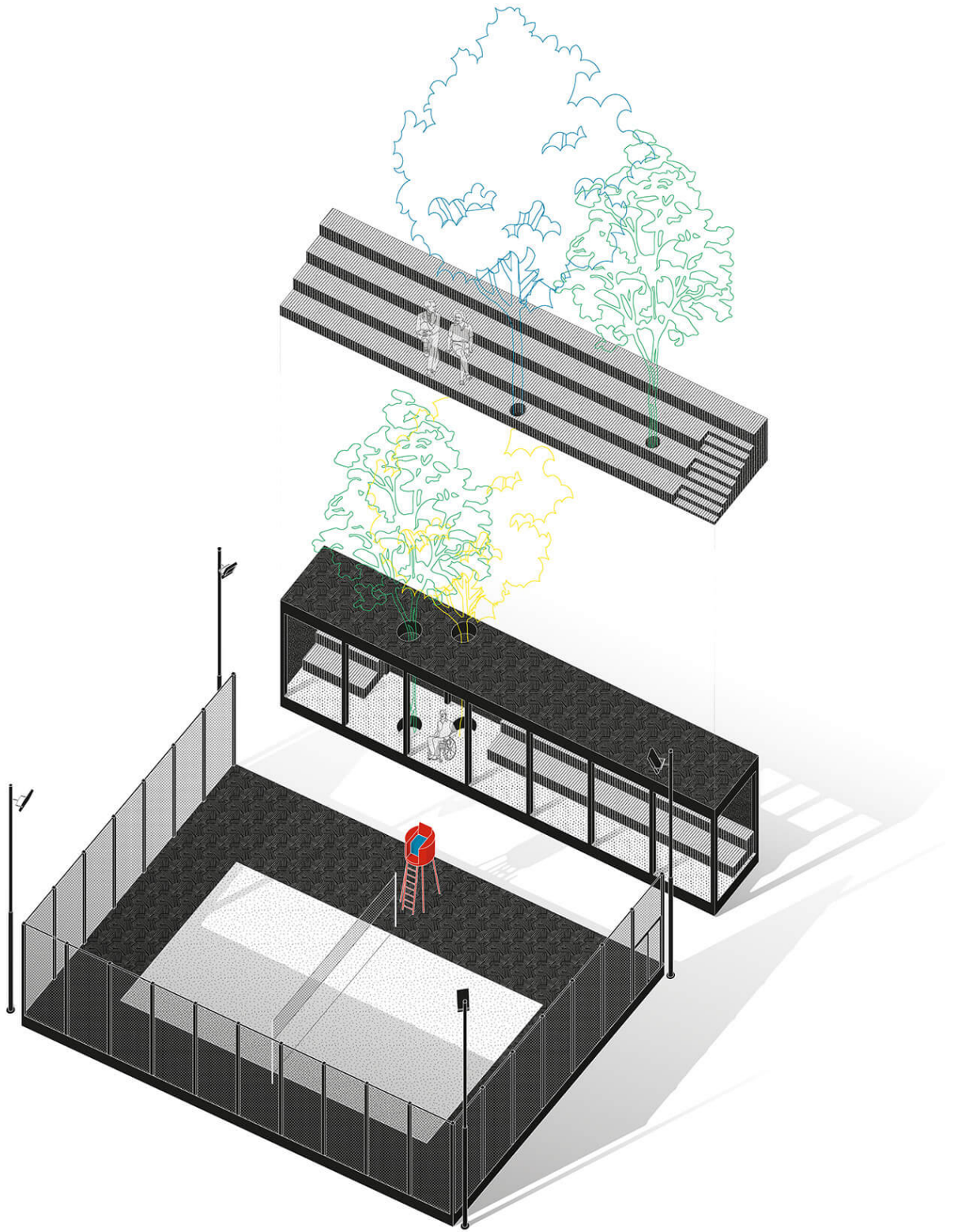


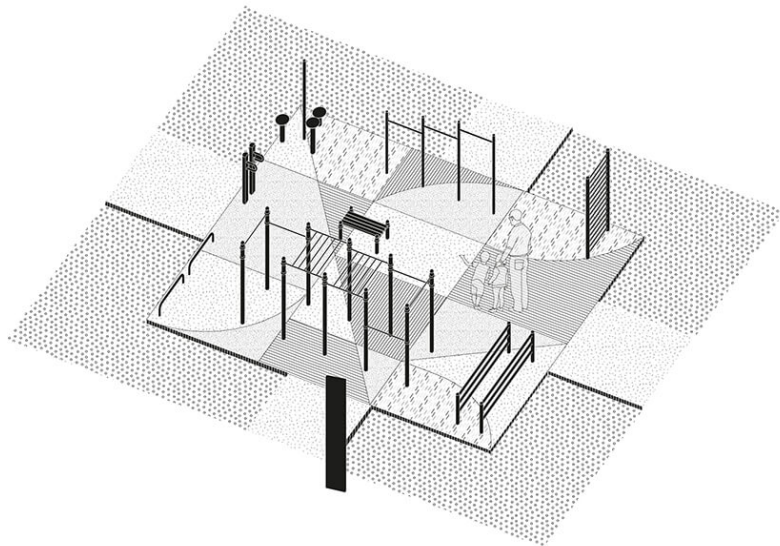
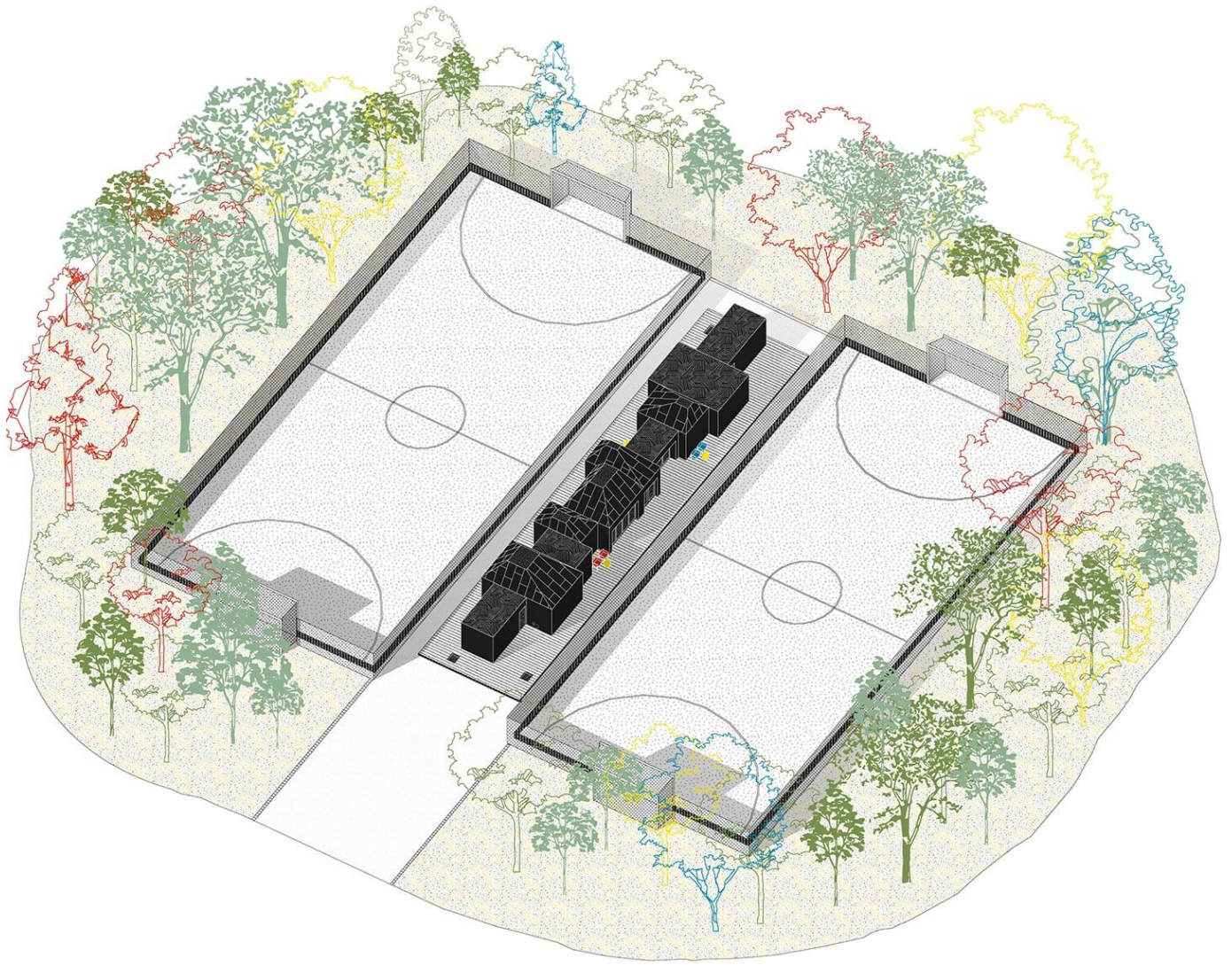


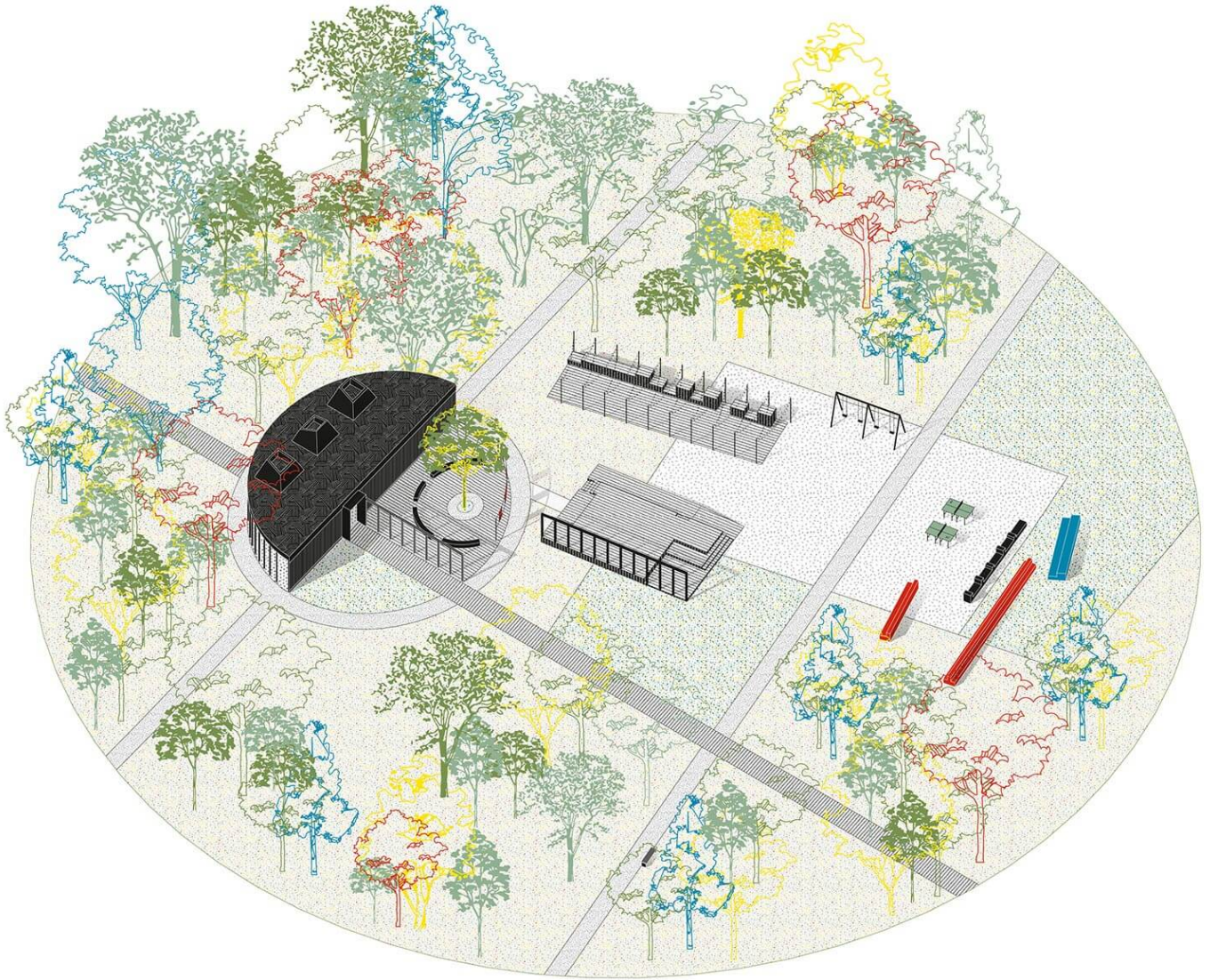












By Naser Nader Ibrahim

Share on:

[f](#) [Twitter](#) [in](#) [WhatsApp](#) [Telegram](#) [Email](#) [Сохранить](#)

Tags

- Moscow
- Russia
- Russian
- Russian Architect
- Park
- Moscow Region
- Dmitry Chebanenko
- Basis architectural bureau
- Malevich Park
- Prak
- Odintsovo
- Maria Repkina
- Zakhar Smirnov
- Grerory Orekhov
- Contemporary Art-Park Malevich
- Art-Park Malevich

Leave a comment

 0 comments

Related articles



New embankment in Zhukovsky, Moscow by Basis architectural bureau

Park



Landscape Of Traces, Taipei, Taiwan by XRANGE Architects

Park



Docklands Park, Yangtze River, Jiangyin designed by BAU (Brearley Architects & Urbanists)

Park



Amazing Architecture, a digital magazine for architecture projects, Interior design, Skyscraper, Visualization, Sketches, Products, Future architecture and Student's projects all over the world.



Join Our Newsletter

Join our email list to get new updates and inspirations for free.

Subscribe now